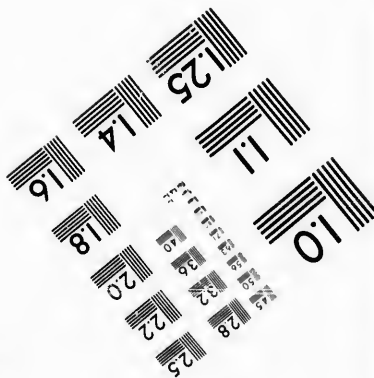
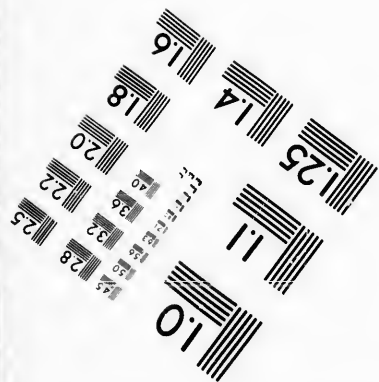
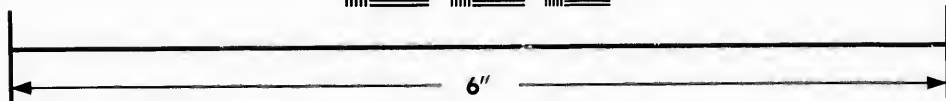
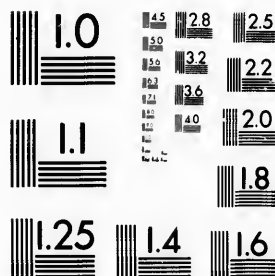


**IMAGE EVALUATION
TEST TARGET (MT-3)**



**Photographic
Sciences
Corporation**

23 WEST MAIN STREET
WEBSTER, N.Y. 14580
(716) 872-4503

**CIHM/ICMH
Microfiche
Series.**

**CIHM/ICMH
Collection de
microfiches.**



Canadian Institute for Historical Microreproductions / Institut canadien de microreproductions historiques

© 1987

Technical and Bibliographic Notes/Notes techniques et bibliographiques

The Institute has attempted to obtain the best original copy available for filming. Features of this copy which may be bibliographically unique, which may alter any of the images in the reproduction, or which may significantly change the usual method of filming, are checked below.

L'Institut a microfilmé le meilleur exemplaire qu'il lui a été possible de se procurer. Les détails de cet exemplaire qui sont peut-être uniques du point de vue bibliographique, qui peuvent modifier une image reproduite, ou qui peuvent exiger une modification dans la méthode normale de filmage sont indiqués ci-dessous.

- Coloured covers/
Couverture de couleur
- Covers damaged/
Couverture endommagée
- Covers restored and/or laminated/
Couverture restaurée et/ou pelliculée
- Cover title missing/
Le titre de couverture manque
- Coloured maps/
Cartes géographiques en couleur
- Coloured ink (i.e. other than blue or black)/
Encre de couleur (i.e. autre que bleue ou noire)
- Coloured plates and/or illustrations/
Planches et/ou illustrations en couleur
- Bound with other material/
Relié avec d'autres documents
- Tight binding may cause shadows or distortion along interior margin/
La reliure serrée peut causer de l'ombre ou de la distorsion le long de la marge intérieure
- Blank leaves added during restoration may appear within the text. Whenever possible, these have been omitted from filming/
Il se peut que certaines pages blanches ajoutées lors d'une restauration apparaissent dans le texte, mais, lorsque cela était possible, ces pages n'ont pas été filmées.
- Additional comments:
Commentaires supplémentaires:

- Coloured pages/
Pages de couleur
- Pages damaged/
Pages endommagées
- Pages restored and/or laminated/
Pages restaurées et/ou pelliculées
- Pages discoloured, stained or foxed/
Pages décolorées, tachetées ou piquées
- Pages detached/
Pages détachées
- Showthrough/
Transparence
- Quality of print varies/
Qualité inégale de l'impression
- Includes supplementary material/
Comprend du matériel supplémentaire
- Only edition available/
Seule édition disponible
- Pages wholly or partially obscured by errata slips, tissues, etc., have been refilmed to ensure the best possible image/
Les pages totalement ou partiellement obscurcies par un feuillet d'errata, une pelure, etc., ont été filmées à nouveau de façon à obtenir la meilleure image possible.

This item is filmed at the reduction ratio checked below/
Ce document est filmé au taux de réduction indiqué ci-dessous.

10X	14X	18X	22X	26X	30X
<input type="checkbox"/>	<input type="checkbox"/>	<input type="checkbox"/>	<input checked="" type="checkbox"/>	<input type="checkbox"/>	<input type="checkbox"/>
12X	16X	20X	24X	28X	32X

The copy filmed here has been reproduced thanks to the generosity of:

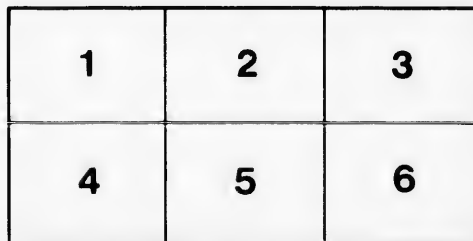
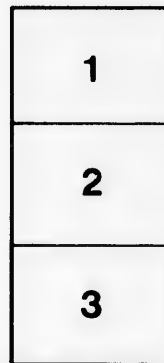
Library Division
Provincial Archives of British Columbia

The images appearing here are the best quality possible considering the condition and legibility of the original copy and in keeping with the filming contract specifications.

Original copies in printed paper covers are filmed beginning with the front cover and ending on the last page with a printed or illustrated impression, or the back cover when appropriate. All other original copies are filmed beginning on the first page with a printed or illustrated impression, and ending on the last page with a printed or illustrated impression.

The last recorded frame on each microfiche shall contain the symbol \rightarrow (meaning "CONTINUED"), or the symbol ∇ (meaning "END"), whichever applies.

Maps, plates, charts, etc., may be filmed at different reduction ratios. Those too large to be entirely included in one exposure are filmed beginning in the upper left hand corner, left to right and top to bottom, as many frames as required. The following diagrams illustrate the method:



L'exemplaire filmé fut reproduit grâce à la générosité de:

Library Division
Provincial Archives of British Columbia

Les images suivantes ont été reproduites avec le plus grand soin, compte tenu de la condition et de la netteté de l'exemplaire filmé, et en conformité avec les conditions du contrat de filmage.

Les exemplaires originaux dont la couverture en papier est imprimée sont filmés en commençant par le premier plat et en terminant soit par la dernière page qui comporte une empreinte d'impression ou d'illustration, soit par le second plat, selon le cas. Tous les autres exemplaires originaux sont filmés en commençant par la première page qui comporte une empreinte d'impression ou d'illustration et en terminant par la dernière page qui comporte une telle empreinte.

Un des symboles suivants apparaîtra sur la dernière image de chaque microfiche, selon le cas: le symbole \rightarrow signifie "A SUIVRE", le symbole ∇ signifie "FIN".

Les cartes, planches, tableaux, etc., peuvent être filmés à des taux de réduction différents. Lorsque le document est trop grand pour être reproduit en un seul cliché, il est filmé à partir de l'angle supérieur gauche, de gauche à droite, et de haut en bas, en prenant le nombre d'images nécessaire. Les diagrammes suivants illustrent la méthode.

etails
s du
odifier
une
mage

errata
to

pelure,
n à

32X

NW/p
998
C954s



THE search so ably accomplished by that distinguished officer Captain F. L. McClintock, R. N., in his recent Expedition in the schooner *Fox*, has ascertained that Captain FRANCIS RAWDON MOIRA CROZIER, R. N., F. R. S. F. R. A. S., of Her Majesty's ship *Terror*, had come to an untimely death whilst in command of the Expedition despatched from England on the 22nd of May, 1845, under the late lamented Sir John Franklin, C. B., in search of the "North-west Passage." Some of the friends of Captain Crozier, cherishing the memory of his private worth, and being also desirous to commemorate his scientific attainments, and his gallant services, both in the Arctic and Antarctic Regions, met in his native Town of Banbridge, in the County of Down, on the 13th October, 1859.

JOHN T. REILLY, Esq., D. L. & J. P., in the Chair:

It was moved by E. H. TREVOR, Esq., J. P., and seconded by J. H. LOFTIE, Esq., J. P., and carried.

THAT a Public Memorial, in such form as the Committee may hereafter agree upon, be erected in his native town of Banbridge, in the County of Down, to the gallantry and heroic endurance of the late Captain Francis R. M. Crozier, R. N., who, with his noble Companions, perished in the Arctic Regions, in the service of his Country, as Capt'n of Her Majesty's ship *Terror*, in the ill-fated Expedition under the command of the late Sir John Franklin.

It was Moved by GEORGE G. TYRRELL, Esq., and Seconded by the REV. JOHN MONTGOMERY,

THAT the sympathy and condolence of this Meeting be conveyed to Lady Franklin, on the afflicting intelligence recently obtained of the death of her late gallant husband, and their appreciation of the noble efforts made by her to ascertain his fate, and that of his heroic Companions.

JOHN TEMPLE REILLY, Chairman.
G. G. TYRRELL, Hon. Secretary.

The

THE following Noblemen and Gentlemen have consented to act as Members of a Committee to carry into effect the foregoing resolution, and to raise Funds from the general Public.

The Most Honorable the Marquis of Downshire.
The Most Honorable the Marquis of Londonderry.
The Lord Edwin Hill, M.P.
The Right Honorable the Lord Lurgan.
The Right Honorable Joseph Napier.
The Right Honorable James Whiteside, M.P.
The Honorable Mr. Justice Hayes.
Rear Admiral Sir James Clark Ross, F.R.S.
Major General Sabine, R.A., D.C.L., F.R.S.
The Rev. H. Lloyd, LL.D., S.F.T.C.D., F.R.S., M.R.I.A.
Rear Admiral Sir George Back, R.N.
Rear Admiral Horatio Thomas Austin, C.B.
Captain Edward Joseph Bird, R.N.
Captain F. Leopold M'Clintock, R.N.
The Rev. James H. Todd, D.D., S.F.T.C.D., President R.I.A.
Mr. Sergeant O'Hagan.
Robert Andrews, Esq., Q.C., LL.D.
H. H. Joy, Esq., Q.C., LL.D.
Peter Quin, Esq., M.P.
John Reilly, Esq., Deputy Keeper of the Rolls of Ireland.
William Crozier, Esq., A.M.
William Sharman Crawford, Esq., D.L. J.P.
Hugh Montgomery, Esq., D.L. J.P.

LOCAL COMMITTEE.

John Temple Reilly, Esq., D.L., J.P., Chairman.

Robert Patterson, F.R.S., M.R.I.A.	Henry Purdon, Esq., M.D.
Samuel Gibson Getty, Esq., J.P.	George C. Lindsay, Esq.
J. Henry Loftie, Esq., J.P.	John Nicholson, Esq.
Edward Hill Trevor, Esq., J.P.	Samuel Hill, Esq.
James Quin, Esq., J.P.	Denis Leonard, Esq.
George Brush, Esq., J.P.	Thomas Ferguson, Esq.
John W. M'Master, Esq., J.P.	Robert M'Clelland, Esq.
William Waugh, Esq., J.P.	James Dickson, Esq.
George Tyrrell, Esq., M.D.	George G. Tyrrell, Esq.

GEORGE G. TYRRELL, Hon. Secretary,
Banbridge.

Subscriptions will be received by any Member of the Committee, and by the following:--]

The Bank of Ireland and its Branches.
The Provincial Bank of Ireland and its Branches.
The Royal Bank of Ireland,
Messrs. Ball & Co., Bankers, Dublin.
Messrs. Drummond & Co., Bankers, London.
Messrs. Biddulph, Cox., & Co., Bankers, London.
The Army and Navy Club, London.
Junior United Service Club, London.
Hibernian United Service Club, Dublin.

And by the Treasurers

JOHN T. REILLY, }
GEORGE C. LINDSAY, } Banbridge.

Communications to be addressed to "The Secretary, Crozier Memorial, Banbridge."

Subscriptions will from time to time be acknowledged in the Press.

